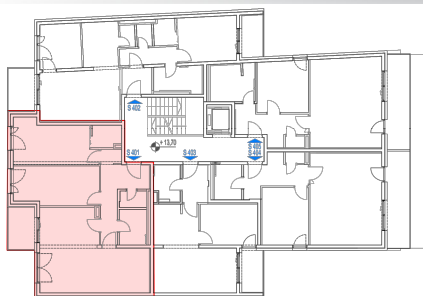
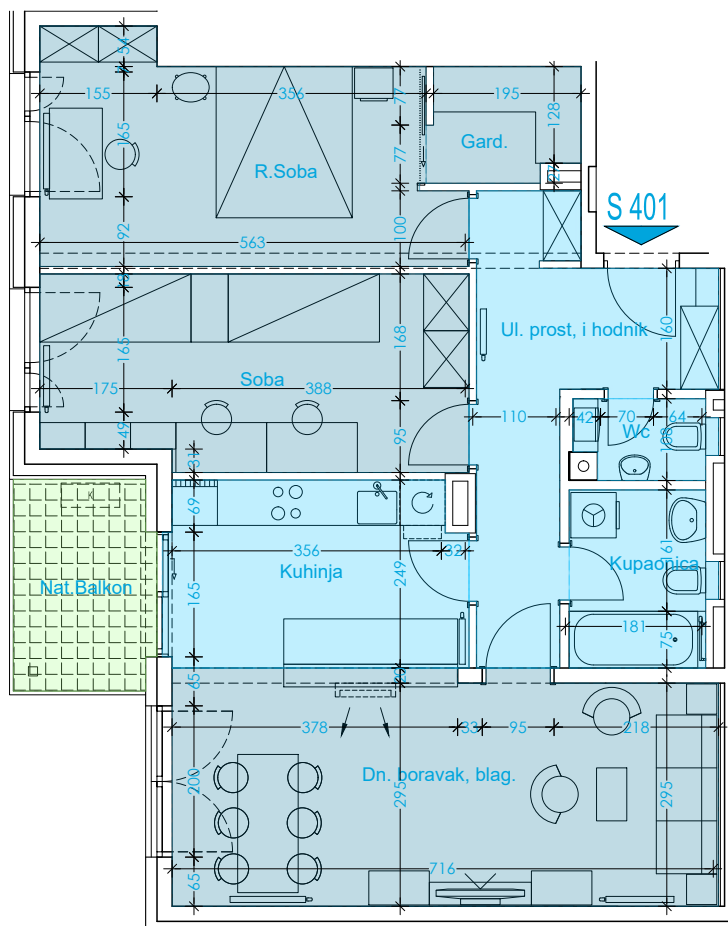
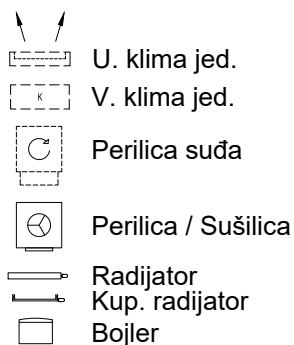


STAN : S401



Etaža : 4. Kat
 Površina : 83,89 m²
 Broj soba : 3
 Orientacija : S



Iskaz Netto Površina - Stan 401

Naziv	G. Pod	Osn.pov.	Koef.	Površina
Ul. prost, i hodnik	ker.pl.	10.937m ²		10.94 m ²
Gard.	parket	2.943m ²		2.94 m ²
R.Soba	parket	14.888m ²		14.89 m ²
Soba	parket	14.358m ²		14.36 m ²
Kuhinja	ker.pl.	9.756m ²		9.76 m ²
Wc	ker.pl.	1.856m ²		1.86 m ²
Kupaonica	ker.pl.	4.336m ²		4.34 m ²
Nat.Balkon	gress	5.145m ²	0.50	2.57 m ²
Dn. boravak, blag.	parket	22.246m ²		22.25 m ²
		86.466m ²		83.89 m ²

