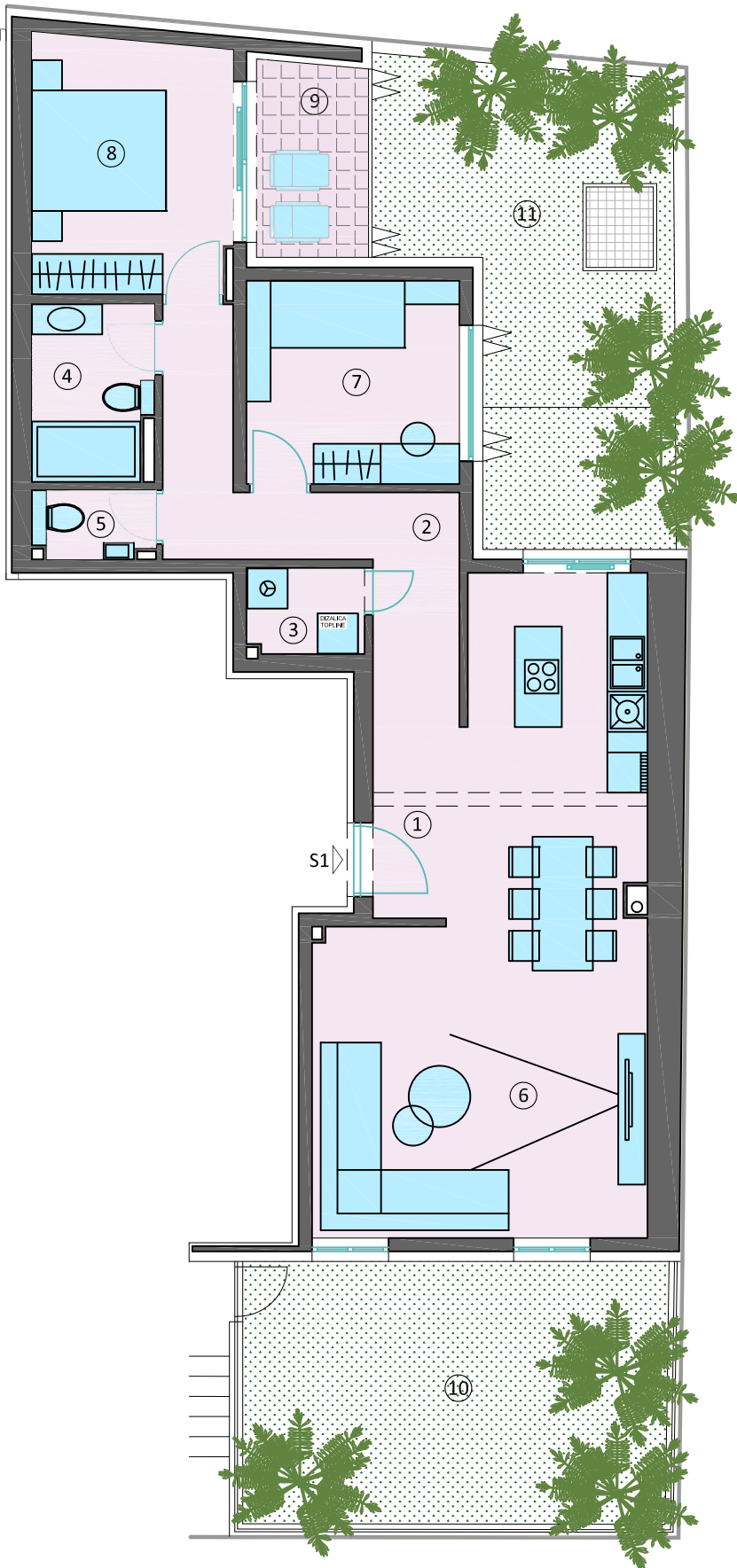


# STAMBENA GRAĐEVINA - ZVONIMIROVA 85, ZAGREB



## PRIZEMLJE

STAN S1	Neto poda (m <sup>2</sup> )
1 PREDSOBLJE	6,62
2 HODNIK	7,37
3 GOSPODARSTVO	2,23
4 WC	1,63
5 KUPAONICA	4,52
6 DN.BORAVAK, KUHINJA I BLAG.	37,82
7 SOBA 1	9,63
8 SOBA 2	11,23
<b>STAN S1 - zatvoreni dio</b>	<b>81,05m<sup>2</sup></b>
9 LOGGIA (4,82m <sup>2</sup> x 0,75)	3,62
10 VRT 1 (24,80m <sup>2</sup> x 0,25)	6,20
11 VRT 2 (25,34m <sup>2</sup> x 0,25)	6,34
<b>STAN S1 - prizemlje ukupno</b>	<b>97,21m<sup>2</sup></b>