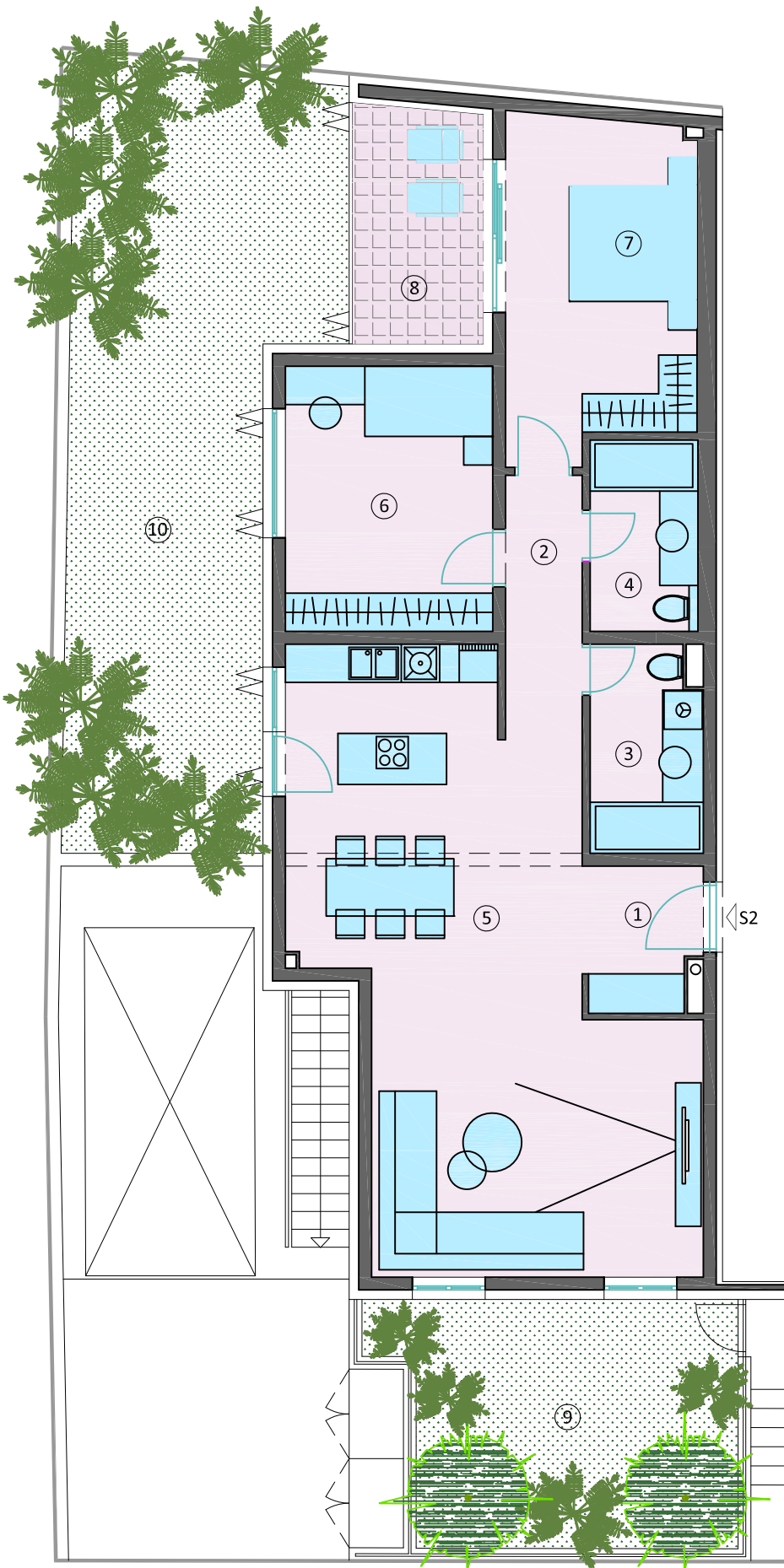


# STAMBENA GRAĐEVINA - ZVONIMIROVA 85, ZAGREB



## PRIZEMLJE

| STAN S2                               | Neto poda (m <sup>2</sup> ) |
|---------------------------------------|-----------------------------|
| 1 PREDSOBLJE                          | 4,06                        |
| 2 HODNIK                              | 4,98                        |
| 3 KUPAONICA 1                         | 5,59                        |
| 4 KUPAONICA 2                         | 4,97                        |
| 5 DN.BORAVAK, KUHINJA I BLAG.         | 45,23                       |
| 6 SOBA 1                              | 13,50                       |
| 7 SOBA 2                              | 15,35                       |
| <b>STAN S2 - zatvoreni dio</b>        | <b>93,68m<sup>2</sup></b>   |
| 8 LOGGIA (7,56m <sup>2</sup> x 0,75)  | 5,67                        |
| 9 VRT 3 (20,46m <sup>2</sup> x 0,25)  | 5,12                        |
| 10 VRT 4 (43,12m <sup>2</sup> x 0,25) | 10,78                       |
| <b>STAN S2 - prizemlje ukupno</b>     | <b>115,25m<sup>2</sup></b>  |